

# LEASING OPPORTUNITY 357.5 YONGE ST, TORONTO



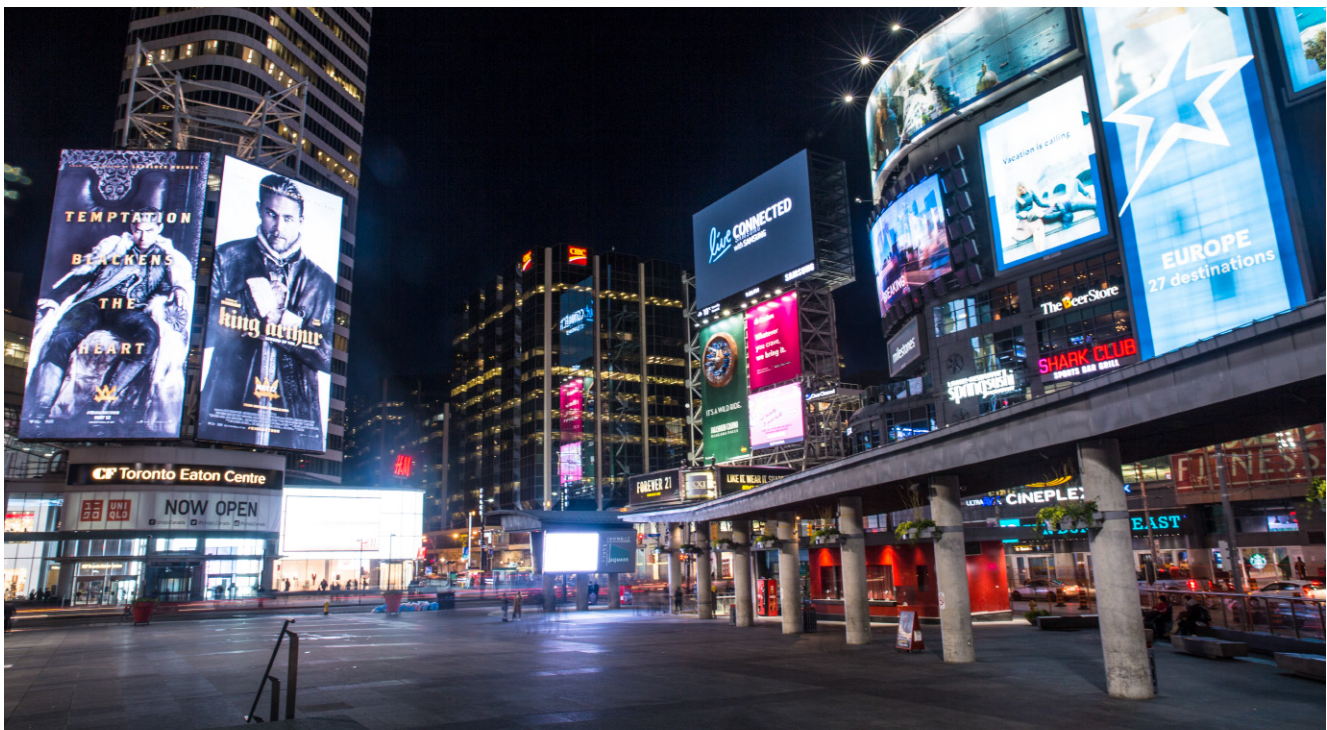
**CONCORD**  
COMMERCIAL PROPERTIES

FOR LEASING INQUIRIES PLEASE CONTACT :  
**416.813.0999**  
**RETAIL@CONCORDALEX.COM**





## STEPS AWAY FROM YONGE-DUNDAS SQUARE



**CONCORD**  
COMMERCIAL PROPERTIES

FOR LEASING INQUIRIES PLEASE CONTACT :  
**416.813.0999**  
**RETAIL@CONCORDDEX.COM**

# FLOOR PLAN AND RATES



	AREA	RATES
Ground Level	1782 sf	Ask for Details
Basement	1064 sf	Ask for Details

**Additional Rent\*\*:** \$32.86 psf

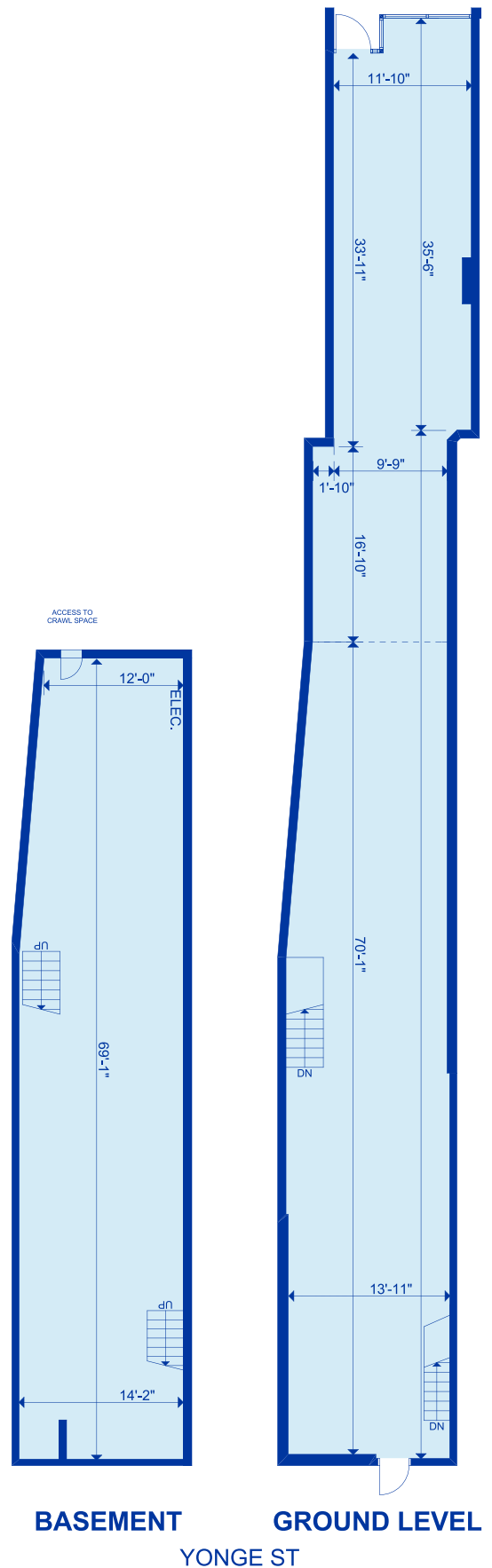
\*\*2024 estimate

**Target Use:**

- Unique restaurant concepts
- Specialty apparel & accessories
- Retail Services

**Occupancy:** Immediate

All measurements are approximate. Lease Rates are subject to change without prior notice. Additional Rent may vary through time. Refer to lease agreement for detail definitions.







**CONCORD**  
COMMERCIAL PROPERTIES

FOR LEASING INQUIRIES PLEASE CONTACT :  
**416.813.0999**  
**RETAIL@CONCORDDEX.COM**



# WITHIN THE GTA





## OUTSIDE OF THE GTA



## HOSPITALITY

